

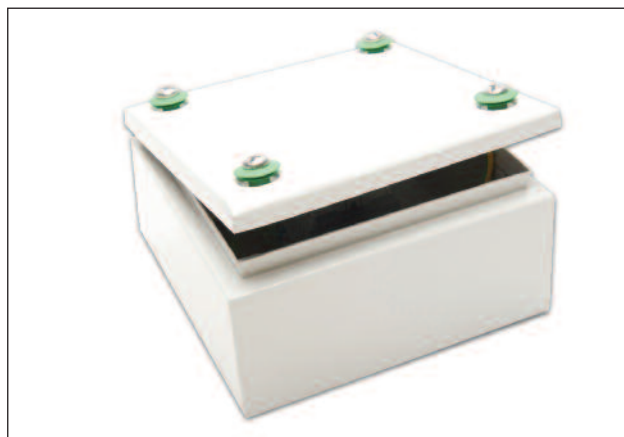
NSYSBM

Mild Steel Industrial Boxes

Mild steel enclosures with a plain lid, with a polyester powder finish in RAL7035. Ideal for use in a wide range of industrial machines and building functions.

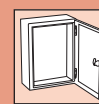
Features and Benefits

- Direct wall-mounting (4 x Ø 10 mm holes with sealing plugs to maintain the IP rating) or with the help of fixing lugs installed from the outside (to be ordered separately, please see the specific accessory pages)
- Extension box (please see page 132) available to increase the range of sizes available
- Equipped with 4 or 6 half-turn thread screws (6 screws provided for boxes with a width greater than 400mm) to ensure maximum watertightness.
- IK10



Mild Steel Industrial Box.

TYPE	Height mm	Width mm	Depth mm	IP Rating	PackCont.
NSYSBM15158	150	150	80	IP66	1
NSYSBM15208	150	200	80	IP66	1
NSYSBM15308	150	300	80	IP66	1
NSYSBM15408	150	400	80	IP66	1
NSYSBM20208	200	200	80	IP66	1
NSYSBM20308	200	300	80	IP66	1
NSYSBM20408	200	400	80	IP66	1
NSYSBM20508	200	500	80	IP66	1
NSYSBM20608	200	600	80	IP66	1
NSYSBM151512	150	150	120	IP66	1
NSYSBM152012	150	200	120	IP66	1
NSYSBM153012	150	300	120	IP66	1
NSYSBM154012	150	400	120	IP66	1
NSYSBM202012	200	200	120	IP66	1
NSYSBM203012	200	300	120	IP66	1
NSYSBM204012	200	400	120	IP66	1
NSYSBM205012	200	500	120	IP66	1
NSYSBM206012	200	600	120	IP66	1
NSYSBM208012	200	800	120	IP66	1
NSYSBM303012	300	300	120	IP66	1
NSYSBM304012	300	400	120	IP66	1
NSYSBM305012	300	500	120	IP66	1
NSYSBM306012	300	600	120	IP66	1
NSYSBM308012	300	800	120	IP66	1
NSYSBM404012	400	400	120	IP66	1
NSYSBM405012	400	500	120	IP66	1
NSYSBM406012	400	600	120	IP66	1
NSYSBM408012	400	800	120	IP66	1



NSYSBMC

Mild Steel Industrial Boxes with FL21 Cable Entry

Mild steel enclosures with a plain lid and two or more FL21 cable gland plates, with a polyester powder finish in RAL7035.

Features and Benefits

- Two or more FL21 cable gland plates for easy drilling and to guarantee the maximum access area, supplied with the enclosure.
- Equipped with 4 or 6 half-turn thread screws (6 screws provided for boxes with a width greater than 400mm) to ensure maximum watertightness.
- IK10



Mild Steel Industrial Box with cable entry plain door.

TYPE	Height mm	Width mm	Depth mm	IP Rating	PackCont.
NSYSBMC153012	150	300	120	IP55	1
NSYSBMC154012	150	400	120	IP55	1
NSYSBMC203012	200	300	120	IP55	1
NSYSBMC204012	200	400	120	IP55	1
NSYSBMC206012	200	600	120	IP55	1
NSYSBMC208012	200	800	120	IP55	1
NSYSBMC303012	300	300	120	IP55	1
NSYSBMC304012	300	400	120	IP55	1
NSYSBMC306012	300	600	120	IP55	1
NSYSBMC308012	300	800	120	IP55	1
NSYSBMC404012	400	400	120	IP55	1
NSYSBMC406012	400	600	120	IP55	1
NSYSBMC408012	400	800	120	IP55	1

NSYSBMB

Mild Steel Industrial Boxes with FL21 Cable Entry and Glazed Door

Mild steel enclosures supplied with FL21 cable gland plates, a hinged cover with a transparent polycarbonate window and a DIN rail. Polyester powder finish in RAL7035.

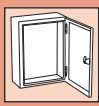
Features and Benefits

- Equipped with 2 half turn thread screws to ensure maximum water-tightness
- IK08



Mild Steel Industrial Box with a glazed door.

TYPE	Height mm	Width mm	Depth mm	IP Rating	PackCont.
NSYSBMB203012	200	300	120	IP55	1
NSYSBMB204012	200	400	120	IP55	1
NSYSBMB206012	200	600	120	IP55	1
NSYSBMB208012	200	800	120	IP55	1

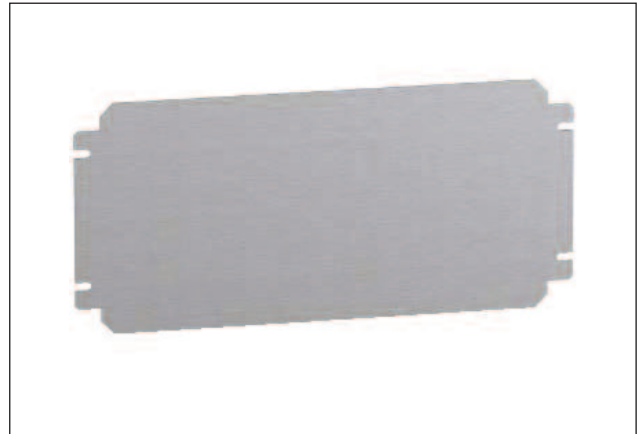


NSYMM

Mounting Plates to suit NSYSBM, NSYSBMC and NSYSBMB Enclosures

Galvanised steel plates with cut-outs for ease of installation.

- Other materials are available on request

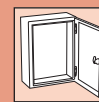


Galvanised Steel Mounting Plate.

TYPE	Height mm	Width mm	Pack Cont.
NSYMM11SB	150	150	1
NSYMM12SB	150	200	1
NSYMM13SB	150	300	1
NSYMM14SB	150	400	1
NSYMM22SB	200	200	1
NSYMM23SB	200	300	1
NSYMM24SB	200	400	1
NSYMM25SB	200	500	1
NSYMM26SB	200	600	1
NSYMM28SB	200	800	1
NSYMM33SB	300	300	1
NSYMM34SB	300	400	1
NSYMM35SB	300	500	1
NSYMM36SB	300	600	1
NSYMM38SB	300	800	1
NSYMM44SB	400	400	1
NSYMM45SB	400	500	1
NSYMM46SB	400	600	1
NSYMM48SB	400	800	1



Other materials are available on request



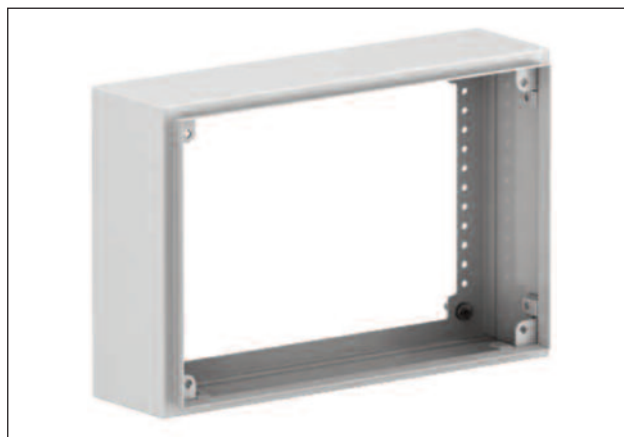
NSYAES

Mild Steel Extension Box for use with NSYSBM and NSYSBMC Enclosures

Extension box that fits onto the corresponding box of the same height and width.

Features and Benefits

- Improved ergonomics and accessibility inside the box
- Increases the interior depth of the box by 80mm
- Maintains IP66 rating (if one extension box is used)



Extension Box.

TYPE	Height mm	Width mm	Depth mm	IP Rating	PackCont.
NSYAES228SB	200	200	80	IP66	1
NSYAES238SB	200	300	80	IP66	1
NSYAES248SB	200	400	80	IP66	1
NSYAES258SB	200	500	80	IP66	1
NSYAES268SB	200	600	80	IP66	1
NSYAES338SB	300	300	80	IP66	1
NSYAES348SB	300	400	80	IP66	1
NSYAES358SB	300	500	80	IP66	1
NSYAES368SB	300	600	80	IP66	1

NSYAEU

Coupling kit suitable for use with NSYSBMB and NSYSBMC Enclosures

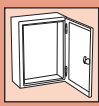
Kit to enable NSYSBMB and NSYSBMC boxes to be coupled together in any combination through the FL21 cable entry openings.

Supplied as one sealing gasket and necessary fixing elements.



Coupling Kit.

TYPE	IP Rating	Pack Cont.
NSYAEUBU148	IP55	1



NSYAEDHSB

Hinges suitable for use with NSYSBM and NSYSBMC Enclosures

The hinges allow the cover to open to more than 180°.

Features and Benefits

- Can be used in conjunction with all covers in the NSYSBM range
- A specific mark on the body indicates where the hole should be drilled
- 3 hinges are required for boxes with a width greater than 500mm



Hinges.

TYPE	Description	Pack Cont.
NSYAEDHSB	Hinges	6

NSYAEFDFSB

Wall Fixing Lugs suitable for use with NSYSBM / NSYSBMC and NSYSBMB enclosures

Wall fixing lugs to be mounted directly onto the rear of the box either in a horizontal or vertical position.

Features and Benefits

- Can be used in conjunction with all covers in the NSYSBM range
- A specific mark on the body indicates where the hole should be drilled



Wall Fixing Lugs.

TYPE	Description	Pack Cont.
NSYAEFDFSB	Wall Fixing Lugs	Set of 4